

Retractor



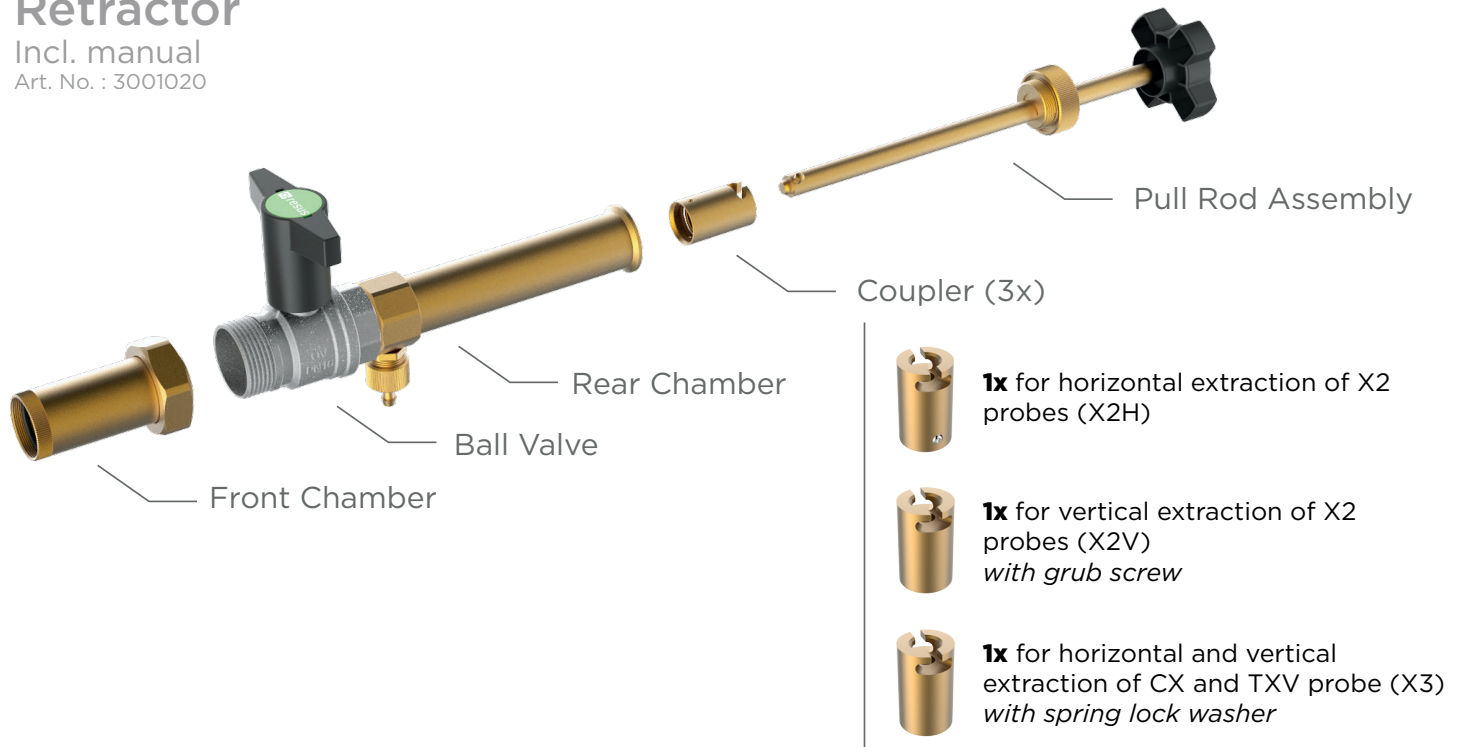
Specification text

Specific tool to service any X-probe during normal operation of the system without interruption.

Components

Retractor

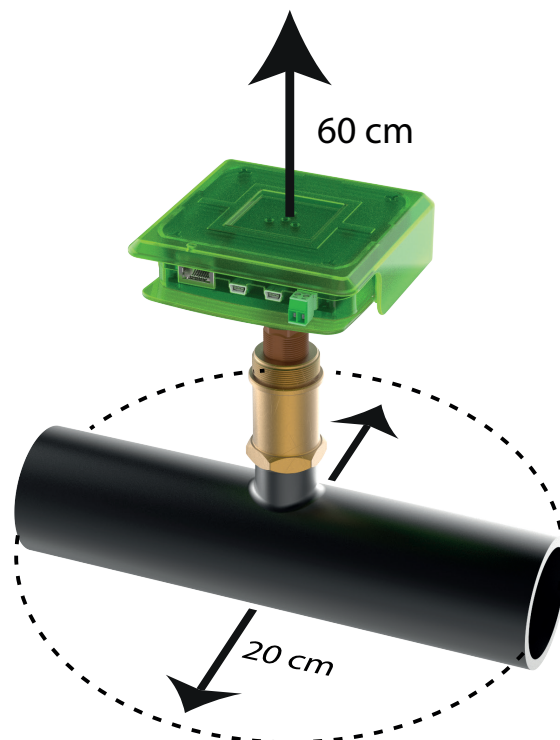
Incl. manual
Art. No. : 3001020



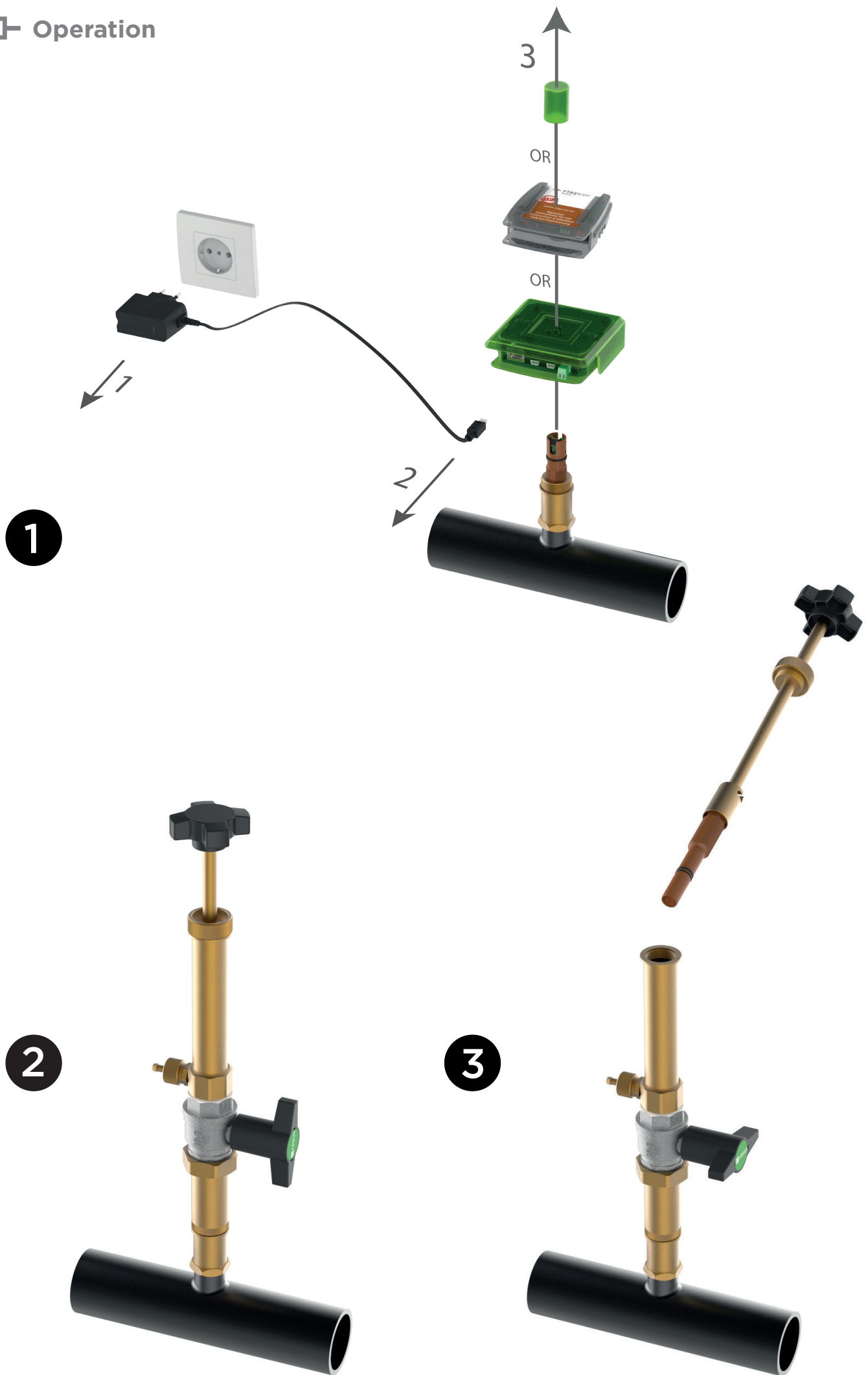
Technical data

- **Material:** Brass + various plastics
- **Pressure range:** 0-6 bar
- **Compatible with:** Risycor X2 + X-fix
Risycor CX + X-fix
Risyttest TXV + X-fix
- **Packaging:** 396 mm x 333 mm x 95 mm
- **Total weight:** 2916 g

Required space for operation



 Operation



Application

The philosophy behind the application of the Risycor is explained in detail in the document "Application guideline".

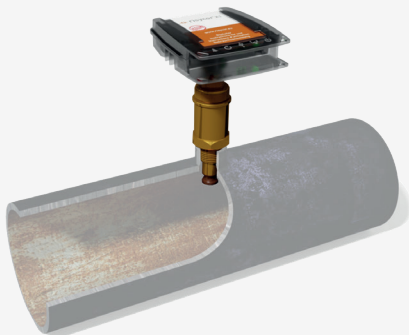
Related products



Risycor TXV-fix set

Art. No. : 1004010

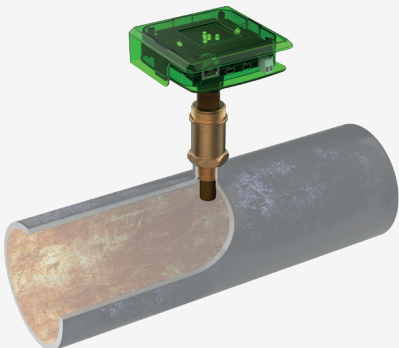
Corrosion tester for visual inspection after removal with a specific tool (Retractor).



Risycor X2-fix set

Art. No. : 1001010
1001020 (UK)

Corrosion monitor with alarm function for heating systems.



Risycor CX-fix set

Art. No. CXE : 1002020
1002050 (UK)
Art. No. CXI : 1002030
1002060 (UK)
Art. No. CXL : under development

Corrosion monitor with alarm function for heating and cooling systems and remote readout of data.



Resus Distri nv
Bredabaan 839
B-2170 MERKSEM (Antwerp)
Belgium

t +32 3 640 33 91
f +32 3 640 33 93

www.resus.eu