

# Risytest TXV

Corrosion tester

+

## X-fix

Threaded connector



### Specification text

**Risytest TXV** corrosion tester for visual inspection after removal with a specific tool (*Retractor*). Mounted perpendicular to the pipe with the threaded connector **X-fix**, which places the metal coupon at the tip of the probe in the water flow. The oxidation of this coupon is representative of the uniform corrosion within the system.

## Components



**Risytest TXV**  
Cap with QR-code



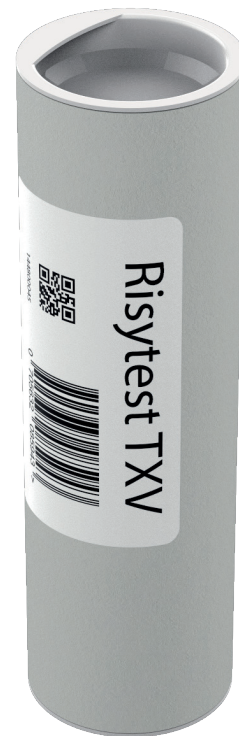
**Risytest TXV**  
Instructions for use



**Risytest TXV**  
Probe



**X-fix**  
Threaded connector



**Risytest TXV-fix set**  
Incl. manual  
Art. No. : 1004010

## Technical data

### Exposure to corrosion

- Permanent

### Material

- Risytest TXV probe: PPS
- Coupon: Fe
- X-fix threaded connector: brass CW614N

### Pressure range

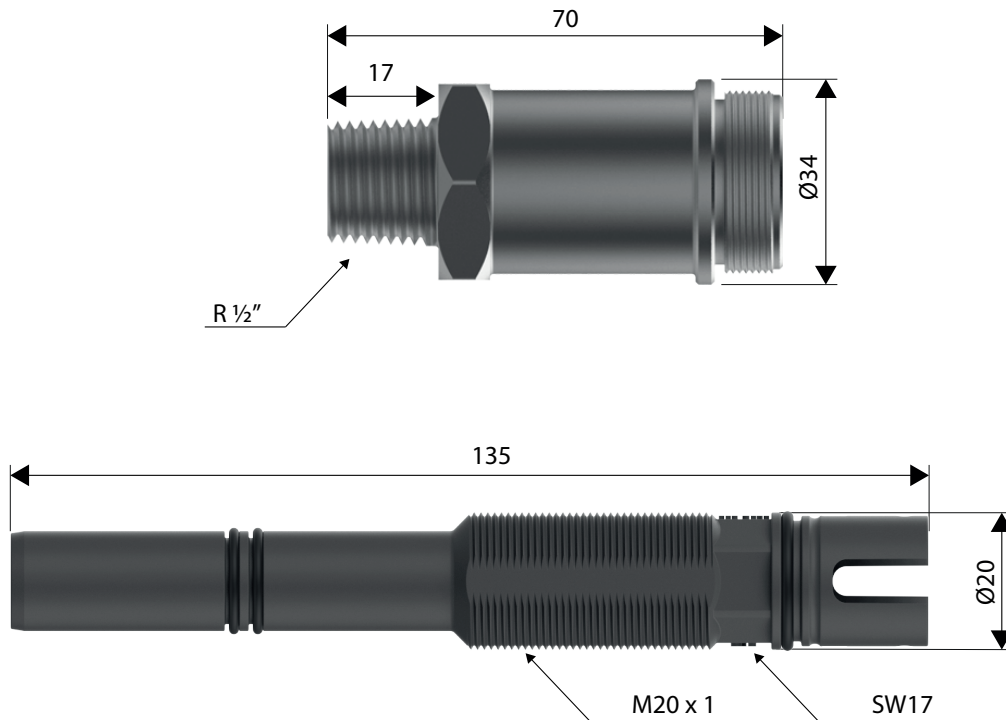
- 0 to 6 bar

### Temperature

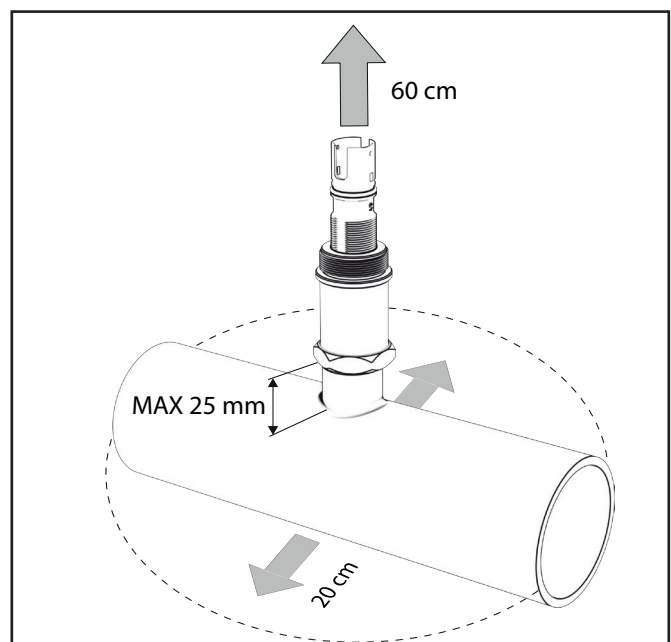
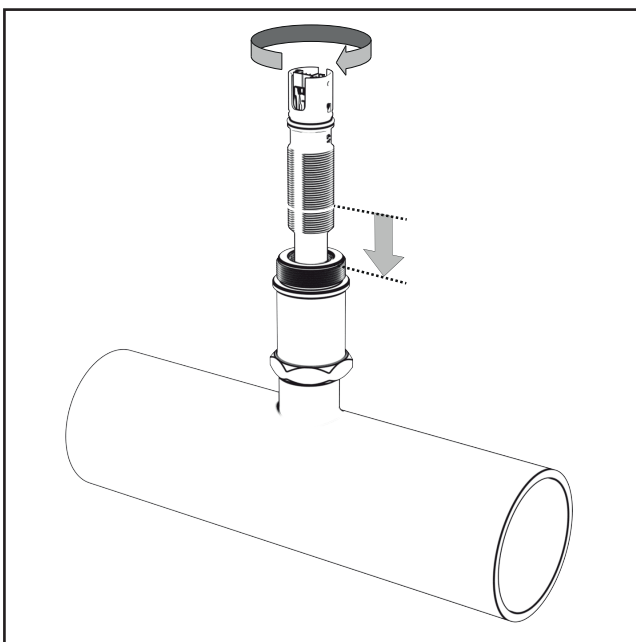
- Environment: 0 °C to 45 °C, no condensation
- Storage: -20 °C to 60 °C

## Dimensions

- Risytest TXV probe Ø20 mm \* 135 mm
- X-fix threaded connector Ø34 mm \* 70 mm with R 1/2" thread (max. 25 mm deep!)
- Carton packaging Ø55 mm \* 170 mm
- Total weight 315 g



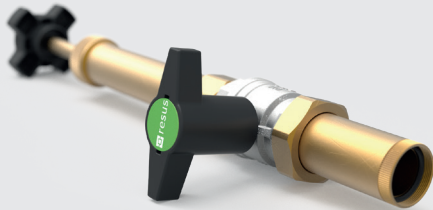
## Assembly tips



## Application

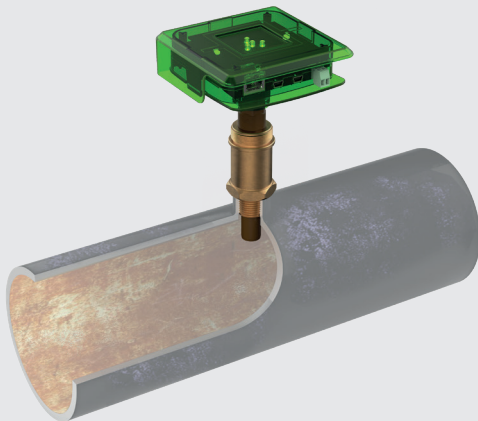
The philosophy behind the application of the Risycor is explained in detail in the document “Application guideline”.

## Related products



### Retractor Art. No. : 3001020

Specific tool to service any X-probe during normal operation of the system without interruption.



### Risycor CX-fix set

Corrosion monitor with alarm function for heating and cooling systems and remote readout of data.

Art. No. CXE: 1002020  
1002050 (UK)

Art. No. CXI: 1002030  
1002060 (UK)

Art. No. CXL: under development



Resus Distri nv  
Bredabaan 839  
B-2170 MERKSEM (Antwerp)  
Belgium

t +32 3 640 33 91  
f +32 3 640 33 93

[www.resus.eu](http://www.resus.eu)